

# Nut fastener for blind hole application

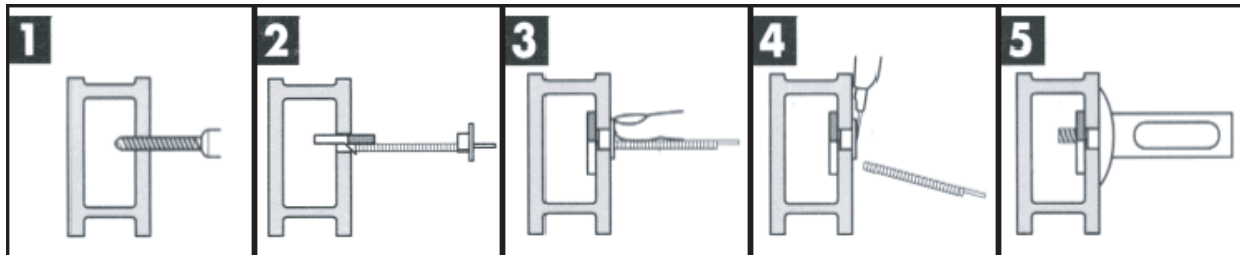
## Mecha Nut



### Feature

- Available in W3/8, M6, M8, M10 Bolt
- Easy installation and **no special tool required**
- Nut provides a large bearing surface**
- For sheet metal or block from 10 to 60mm in thickness with W3/8, M6 (from 10 to 100mm with M8, M10)

### Installation Step



1 Drill a pre-hole.

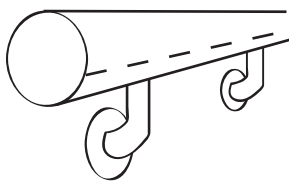
2 Insert MECHA NUT with its nut part being folded.

3 Pushing cap forward and pull strap toward you.

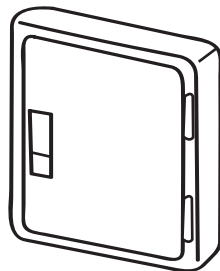
4 Cut off straps level with flange of cap.

5 Install object with a bolt.

### Application



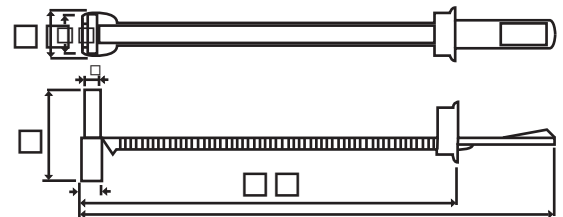
Hand rails



Equipments

### Size/Material

- Material: Stainless Steel AISI 303 (M6)
- Stainless Steel AISI 304 (M8, M10)
- Carbon Steel (W3/8, M6, M8)



Art-No.	Bolt Size	Prehole Diameter (mm)	Length	Length	Nut Length	Nut Width	Nut Width	Max tension Load (kN [kgf])
			L1 (mm)	L2 (mm)		L (mm)	W1 (mm)	
MN-6S	M6	12.0	82.0	106.0	19.0	10.9	8.8	3.92 [400]
MN-8	M8	14.0	136.0	159.0	32.0	13.6	12.0	7.84 [800]
MN-8S	M8							
MN-10S	M10	16.0	136.0	160.0	34.0	15.5	13.0	19.6 [2000]
MN-3/8	W3/8	14.0	80.0	110.0	27.0	13.6	12.0	7.84 [800]

### Note

- Please drill a proper pre-hole.
- Thickness of the material depends on the size.
- The depth of the hollow wall should be more than 20mm with M6, 32mm with M8, 34mm with M10 and 27mm with W3/8.
- Nut will fall down if bolt would be pushed to hard.
- If nuts are set in gypsum board + profile or plywood, the material will be destroyed at about 3.92kN(400kgf). Please take the strength of the board into account.